

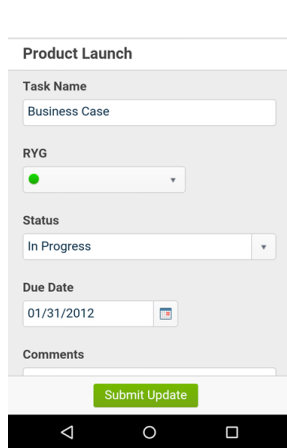
# Smartsheet Product Update

August 7, 2015

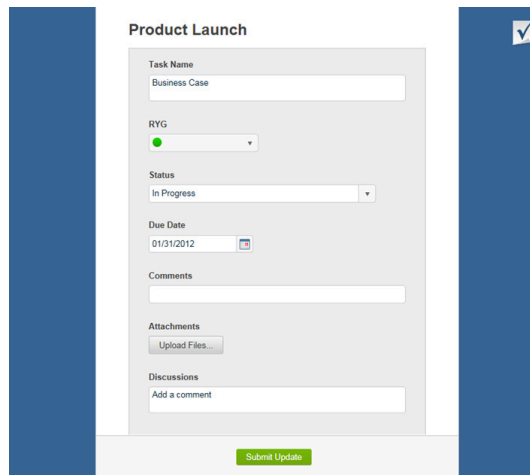
New or updated features in this Smartsheet release include:

## 1. Enhanced Update Requests

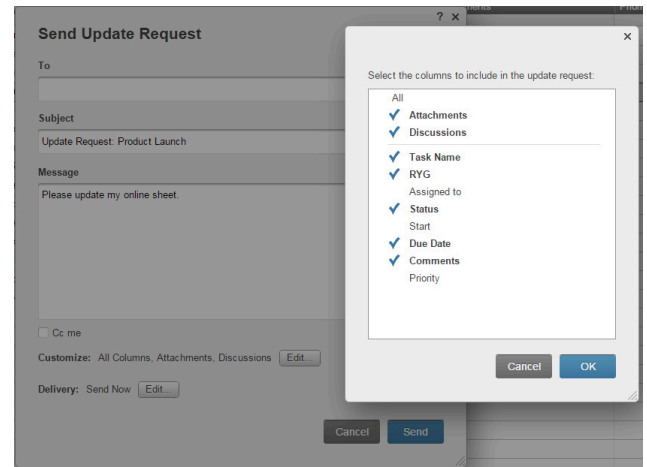
Update requests are now presented in a form layout - easier to use for non-Smartsheet users and optimized for mobile devices. You can now select which columns get included in the Update Request for greater control.



Update Request on a Mobile Device



Update Request on a desktop browser



Select columns to be included in Update Requests:

[Learn More About Update Requests](#)

## 2. Select columns to be included in Send Row

We've added the ability to select columns to the Send Row feature as well as to the Update Request feature.

[Learn More About Sending Rows](#)

## 3. Send Row & Send Update Request from Reports

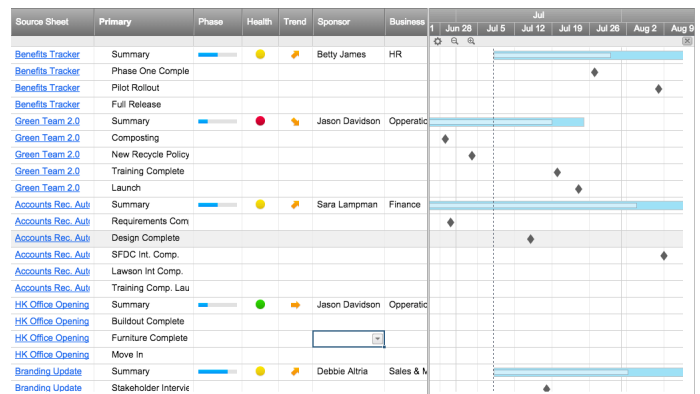
Send Row and Send an Update Request are now available from reports. You can also Send Row or an Update Request on multiple rows in a report if all rows are from the same sheet.

## 4. Gantt & Calendar Views on Reports

Gantt and Calendar view modes are now available on summary reports, making it easier to get a master schedule across sheets or to display key tasks and milestones in a timeline view. By adding dates to your summary reports, you can now enable Gantt and calendar views across sheets. Including % complete in reports will also allow the display of progress bars in the Gantt.

[Learn More About Gantt on Reports](#)

[Learn More About Calendar View on Reports](#)



## 5. Enterprise Authentication and User Auto Provisioning Management

Enterprise SysAdmins now have a self-service UI to configure and manage their Smartsheet account authentication and user auto-provisioning (UAP) settings.

[Learn More About Auto Provisioning](#)

[Learn More About Authentication Options](#)

## 6. Drag and drop to re-order Conditional Formatting rules

You can now drag to reorder conditional formatting rules faster than the old approach of using the Move Up/Move Down menu commands.

## 7. API 2.0 Enhancements

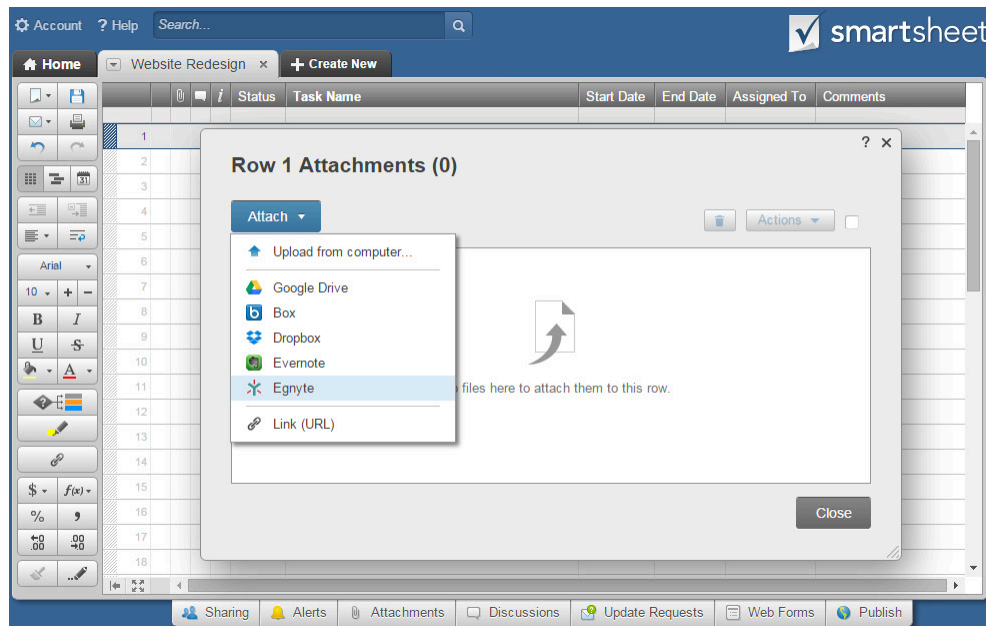
This release continues to extend and improve the Smartsheet API 2.0 and includes the following:

- Copy / move sheet, copy / move folder, copy workspace
- Bulk row delete
- Send sheet as PDF (in Gantt format)
- Create update request
- Lock row, lock column
- List all personal contacts, retrieve details for a personal contact
- Plus a number of other enhancements.

See the detailed [API release notes](#) and the [API documentation](#) @ Smartsheet Developer Portal.

## 8. Egnyte integration

Added Egnyte as an “attach from” option. The feature is analogous to the existing attach from Google Drive, Box, and Dropbox features.



## 9. Issues Fixed

86 bugs were fixed, including these customer-reported issues:

|                           |   |
|---------------------------|---|
| SAML                      | App displaying old certificate expiration date  |
| Conditional Formatting    | Conditional formatting not displayed in Report PDF Export for a column until one of the cells in column has had content   |
| SAML                      | User is shown error message upon resetting password with SAML strict enabled  |
| User Management           | User prompted to request license from SysAdmin even though license has already been provisioned via Linked Domain         |
| Import/Export             | Blank cells are not blank when exporting to Excel   |
| API                       | Non-strict parsing of picklist cell values will fail if the string is not a picklist option and ends with a 'd' or an 'f' |
| Lock                      | Unable to lock multiple rows via lock icon  |
| Web Forms                 | Start and End Dates in web form confirmation emails don't display in standard date format                                 |
| Send Sheet/Row/Attachment | Email for send row duration says 1d shows two days in dates   |
| Publish                   | Report not printing as embedded   |
| Grid                      | Move Row causes column duplication  |